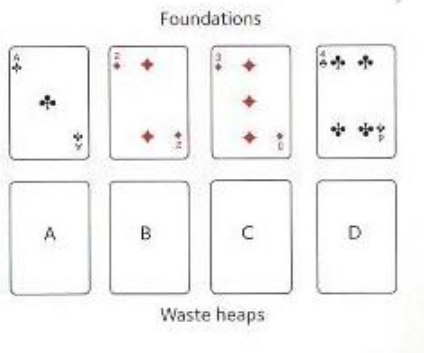
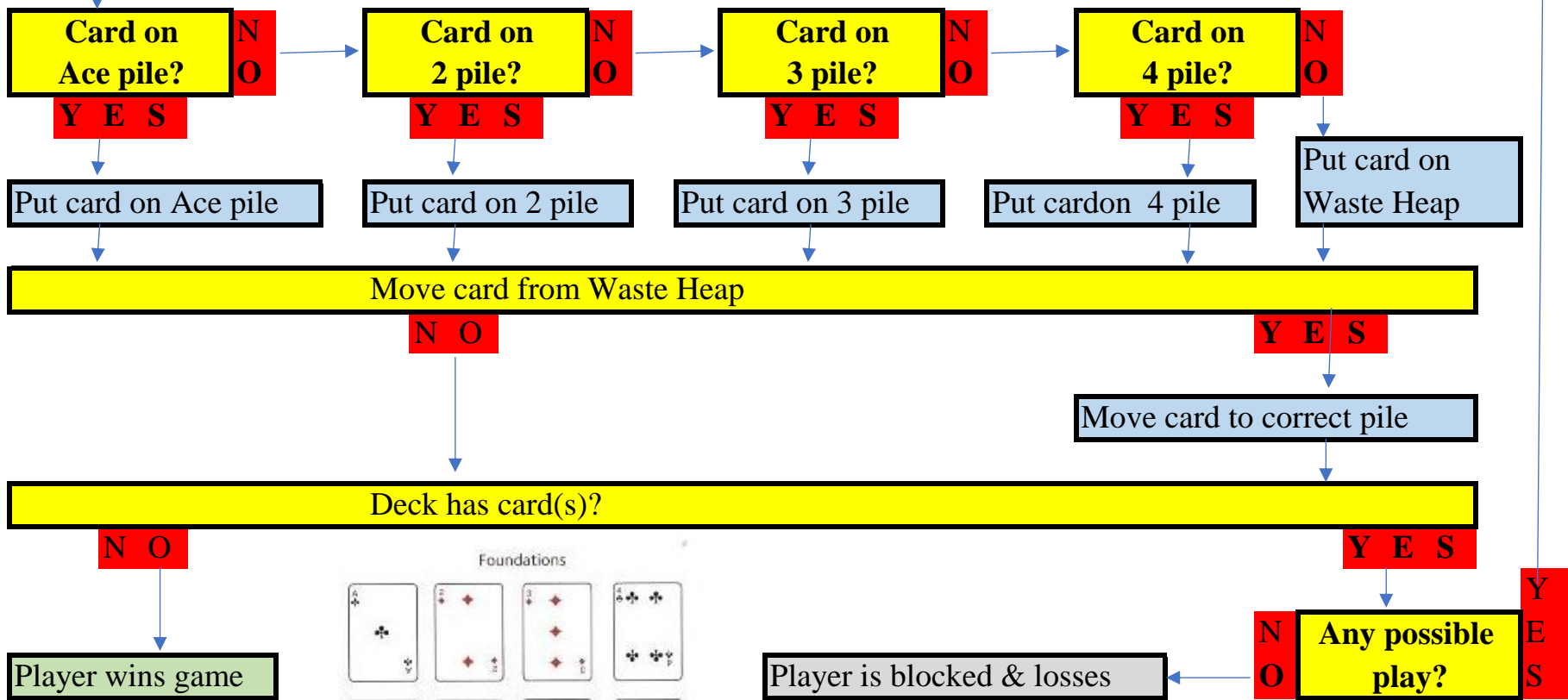


Get an Ace, 2, 3 & 4 from deck Layout cards as shown All cards are played face up

Get card from deck



Sequence required for each foundation

Ace: 2 thru 10, J, Q, K
2: 4, 6, 8, 10, Q & A, 3, 5, 7, 9, J, K
3: 6, 9, Q & 2, 5, 8, J & A, 4, 7, 10, K
4: 8, Q & 3, 7, J & 2, 6, 10 & A, 5, 9, K

Ace = 1, Jack = 11. Queen = 12, King = 13

By 1's: 1 thru 13
By 2's: 2 thru 12 & 1 thru 13
By 3's: 3 thru 12 & 2 thru 11 & 1 thru 13
By 4's: 4 thru 12 & 2 thru 10 & 1 thru 13